

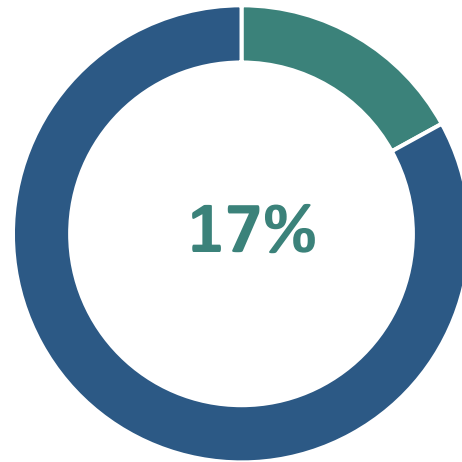


# Policy implications of an ageing population

**Harry Fenton, General Manager, International, Disability and Generational Policy, Ministry of  
Social Development**

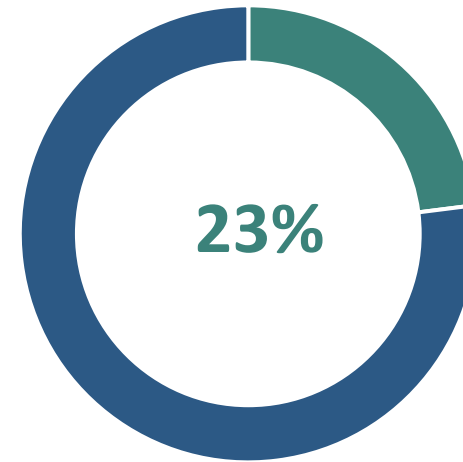
# Our population is growing older and more diverse

Proportion of population age 65+  
2023



■ Aged 65+ ■ Other ages

Projected proportion of  
population age 65+ 2043



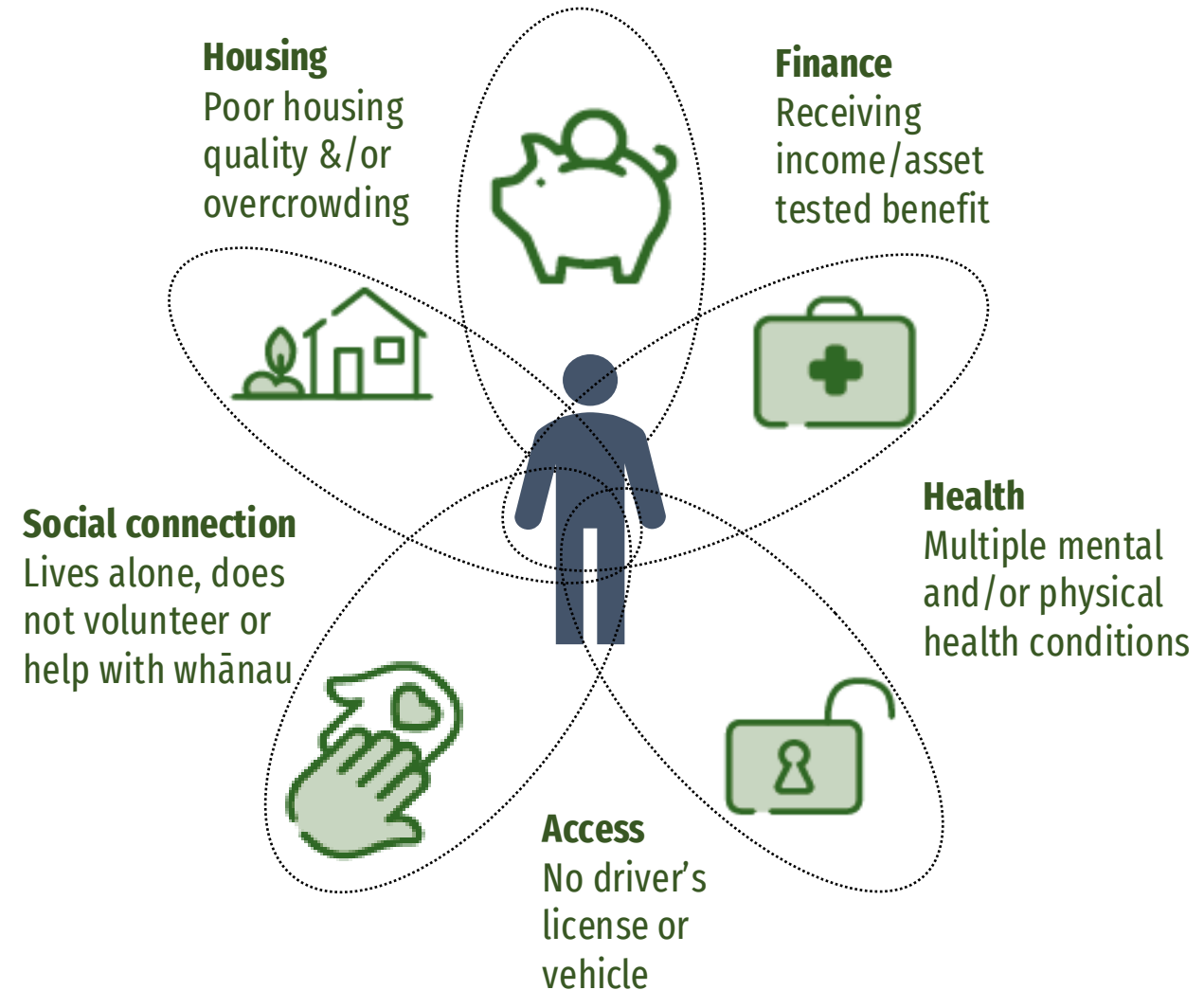
■ Aged 65+ ■ Other ages

# Overall, New Zealand is a good place to grow older

- 49.6 percent of people aged 75+ rate their overall life satisfaction as a 9 or 10 (out of 10)
- 25 percent of older people work
- 32 percent of older people volunteer
- Older people make up 20 percent of our informal carers

# But we know that experiences in later life are not uniform

- At least 196,000 (13 percent) of people aged 50+ experience disadvantage across more than one area of life



# Getting our policy settings right

- Guided by Better Later Life – He Oranga Kaumātua
- Maintaining current eligibility to NZ Superannuation
- Subsidiary dwellings
- Review of the Retirement Villages Act 2004
- Aged care funding and service model review
- Considering how our services are placed to meet the needs of those with compounding disadvantage
- Law Commission Review of Adult Decision-Making Capacity Law

# Age-friendly Aotearoa New Zealand



# Carers' Strategy and Action Plan

- The Carers' Strategy has been in place since 2008 to support and value carers
- 20 percent of carers are aged 65+
- 1 in 7 New Zealanders are carers

# Links to dementia care wareware

- Ensuring there is a continuum of care
- Enhancing the workforce
- Strong social structures and service provision