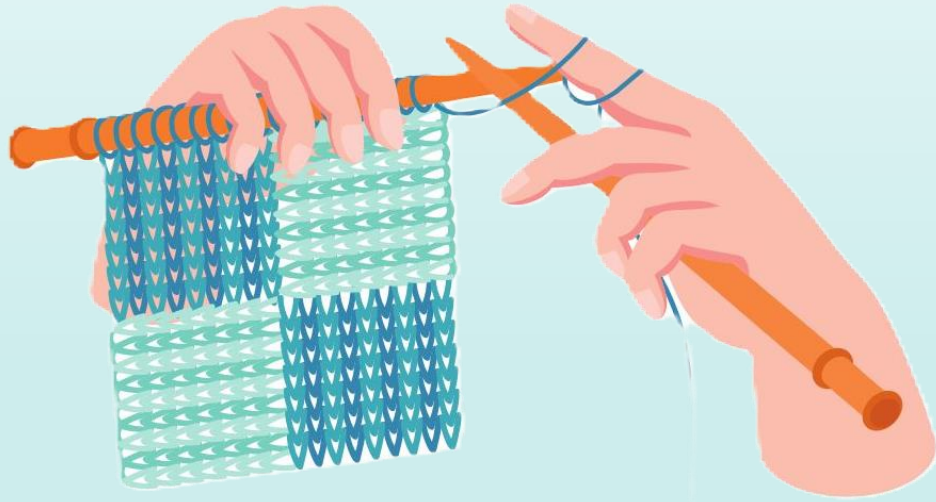
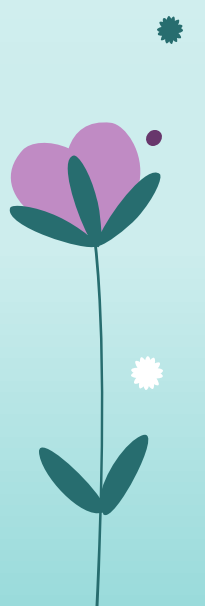
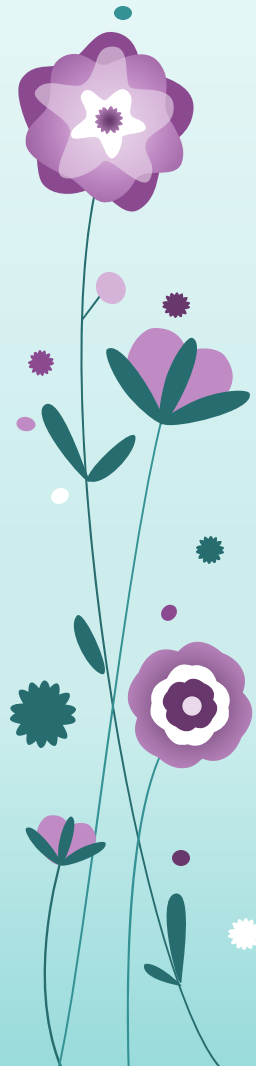


More than a Knitting Circle.

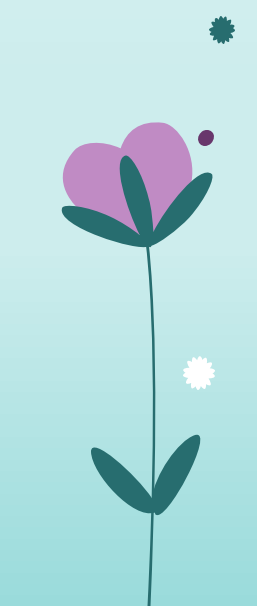
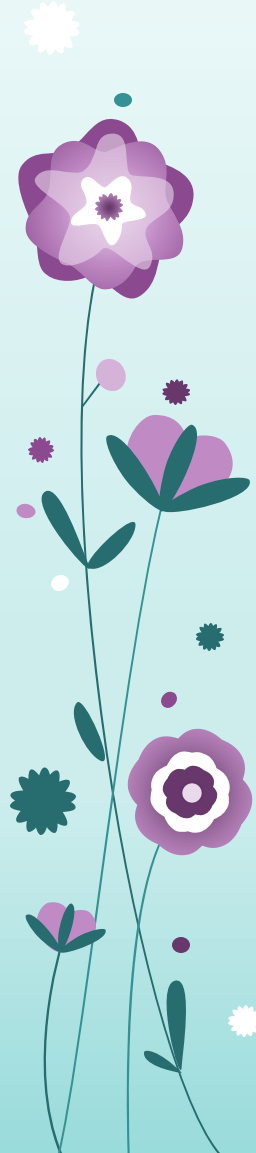


**Presented by
Catherine Donnelly**

**Manager – Alzheimers Marlborough
DipBus JP**



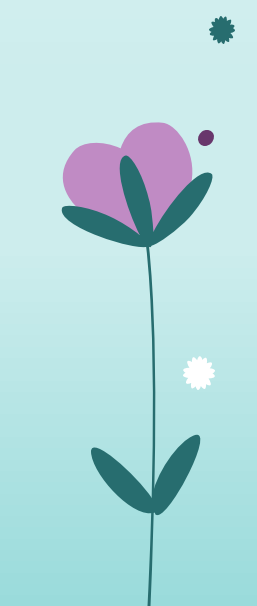
The voices behind this presentation





Imagine a dementia-inclusive community;

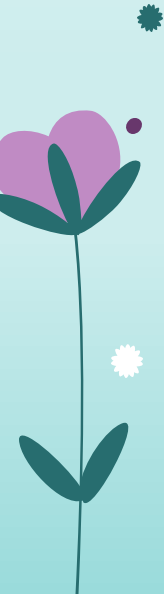
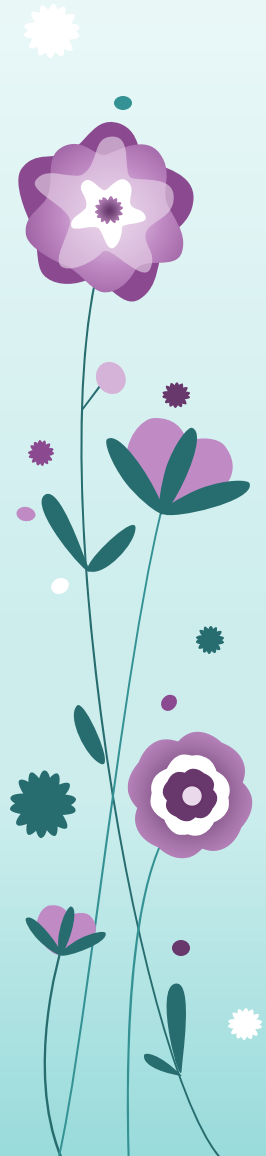
A place where each person's uniqueness is valued, deep relationships flourish and differences are embraced...



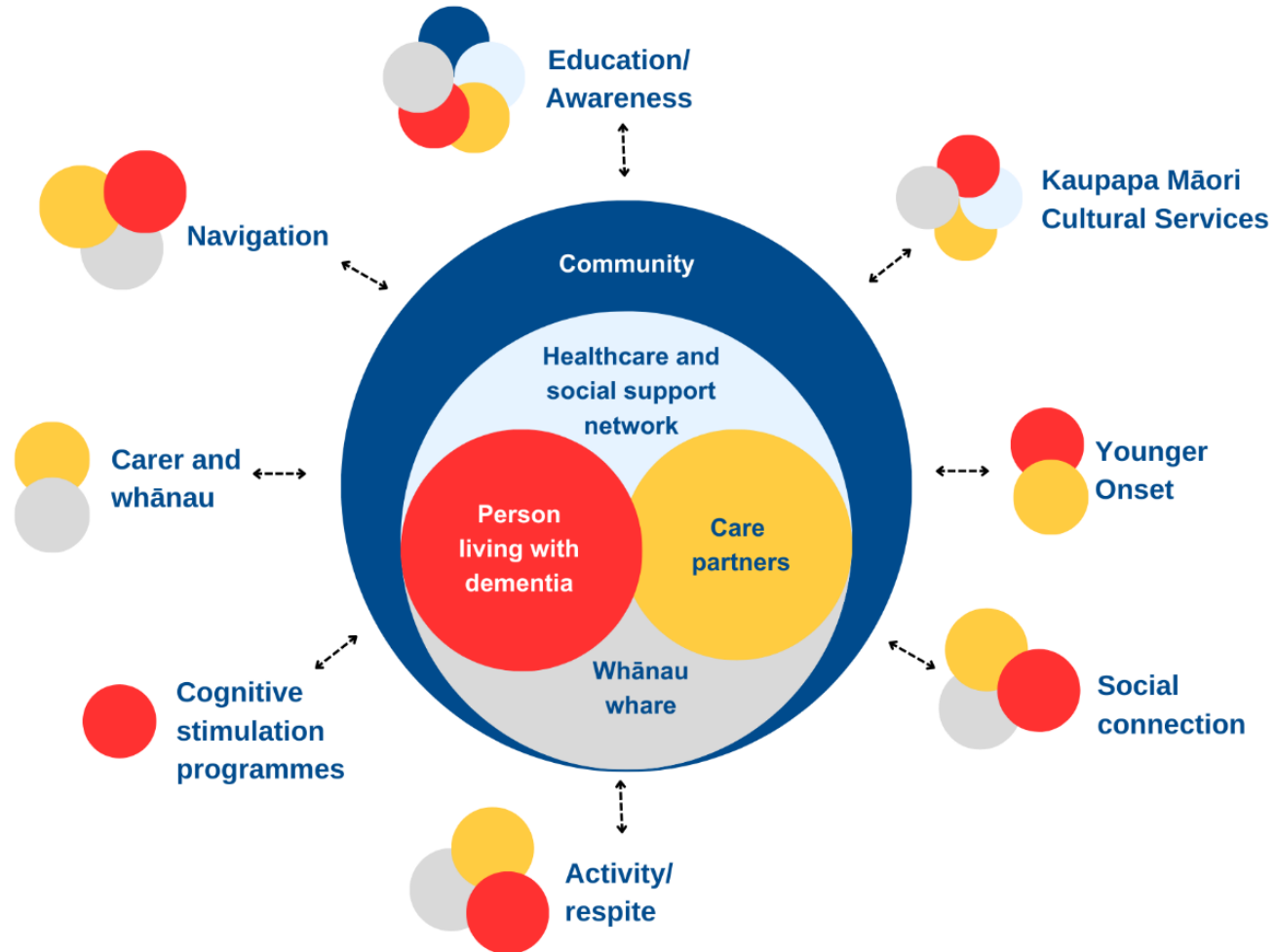
To achieve that vision we need to ensure...

The services we deliver are accessible, equitable, quality assured and best practice, and that no matter where in New Zealand, a person living with dementia resides, they and their whanau have access to services and support.

Community Based Dementia Organisations across the country are working together to take the next steps...



Service Delivery Model



Where Possible we are...

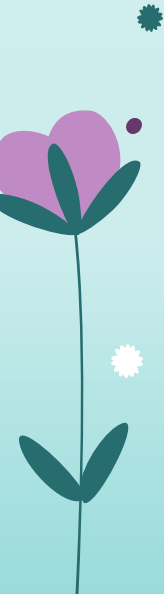
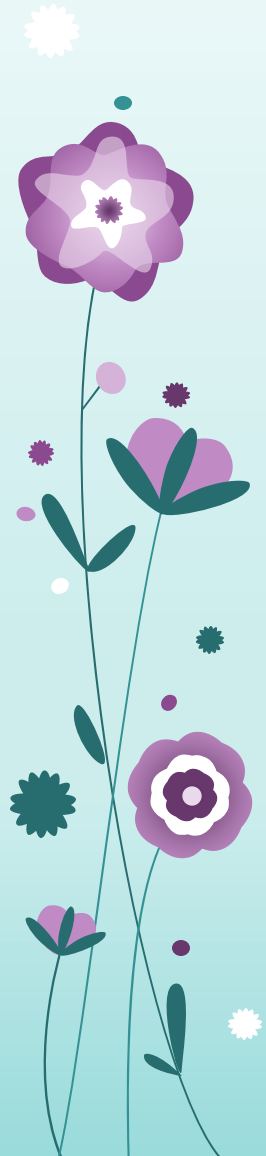
- * Clients generally have access to a named Dementia Advisor
- * Evidence based interventions such as Cognitive Stimulation Therapy,
- * Designing meaningful activity groups
- * Iwi based relationships
- * Young Onset specific services are being developed
- * High quality day programmes (or Clubs)
- * Dementia friendly environments and organisations
- * Local organisations are celebrated with local business awards

**But, and it's a big
"but"...**

...Historical contracting has been a post code lottery

Therefore: these services are,

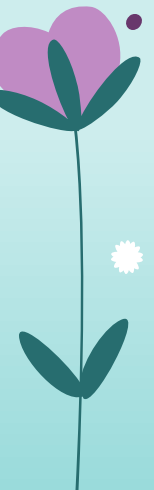
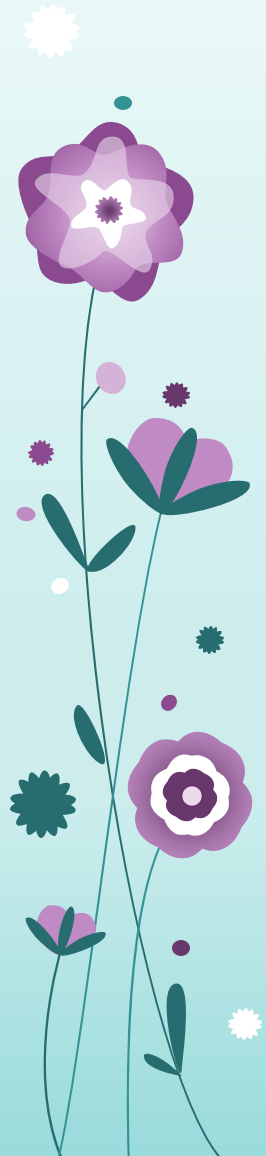
- Disjointed
 - Inconsistent
 - Unfunded
 - Absent
- * Only some people in some areas can access some services
 - * Referrals have been increasing by at least 10-15%
 - * Contracts have historically not allowed for any growth



The challenge ahead is daunting,

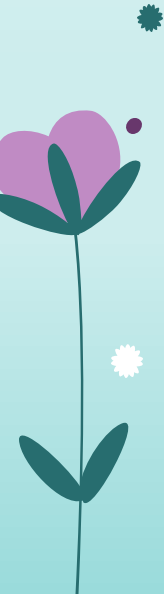
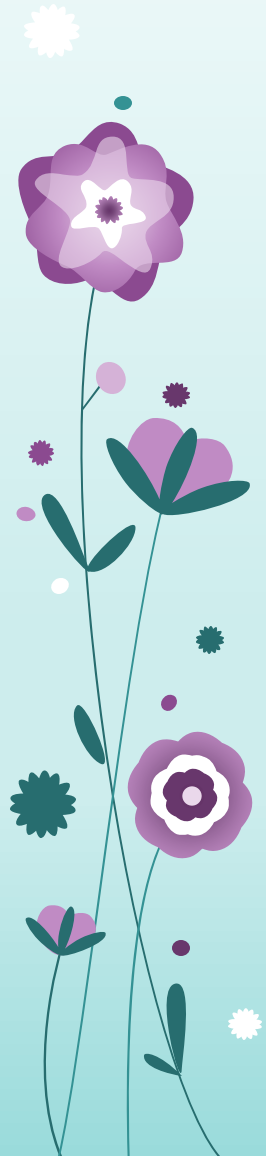
- * **Trained Dementia Advisors**
- * **Cognitive Stimulation Therapy**
- * **Voice of people with dementia**
- * **Iwi based relationships**
- * **Young Onset specific services**
- * **Day programmes**
- * **Raising funds and awareness**
- * **Dementia friendly**

So, if we can influence and establish fair and reasonable relationships and contracts...



**...Then we can make a big step towards
a future with**

A dementia-inclusive community
where each person's perceptions and
experience of the world, while often different
than our own, are taken into account and
honoured.





The smile says
it all!

