



Presentation by Carolyn Cooper, Aged Care Commissioner
Repositioning Dementia Conference
Te Whanganui-a-Tara | Wellington, 24 September 2024

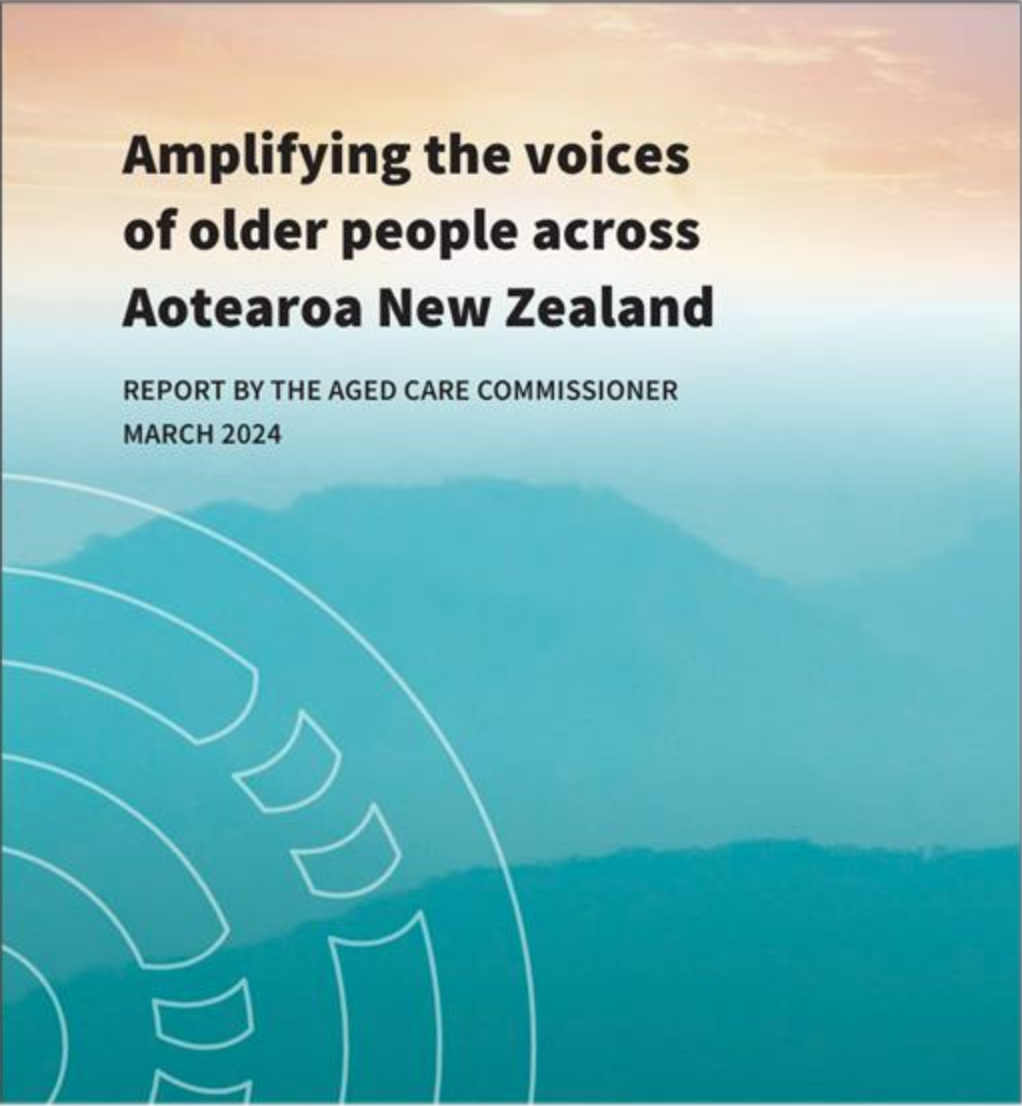


Image by Rashed Ali



Image by League of Live
Illustrators, credit to Rauawaawa
Kaumātua Charitable Trust





**Amplifying the voices
of older people across
Aotearoa New Zealand**

REPORT BY THE AGED CARE COMMISSIONER
MARCH 2024

Aged Care Commissioner report, Amplifying the voices of older people (March 2024)

Download here:

<https://www.hdc.org.nz/our-work/aged-care-commissioner/amplifying-the-voices-of-older-people-in-aotearoa-new-zealand/>

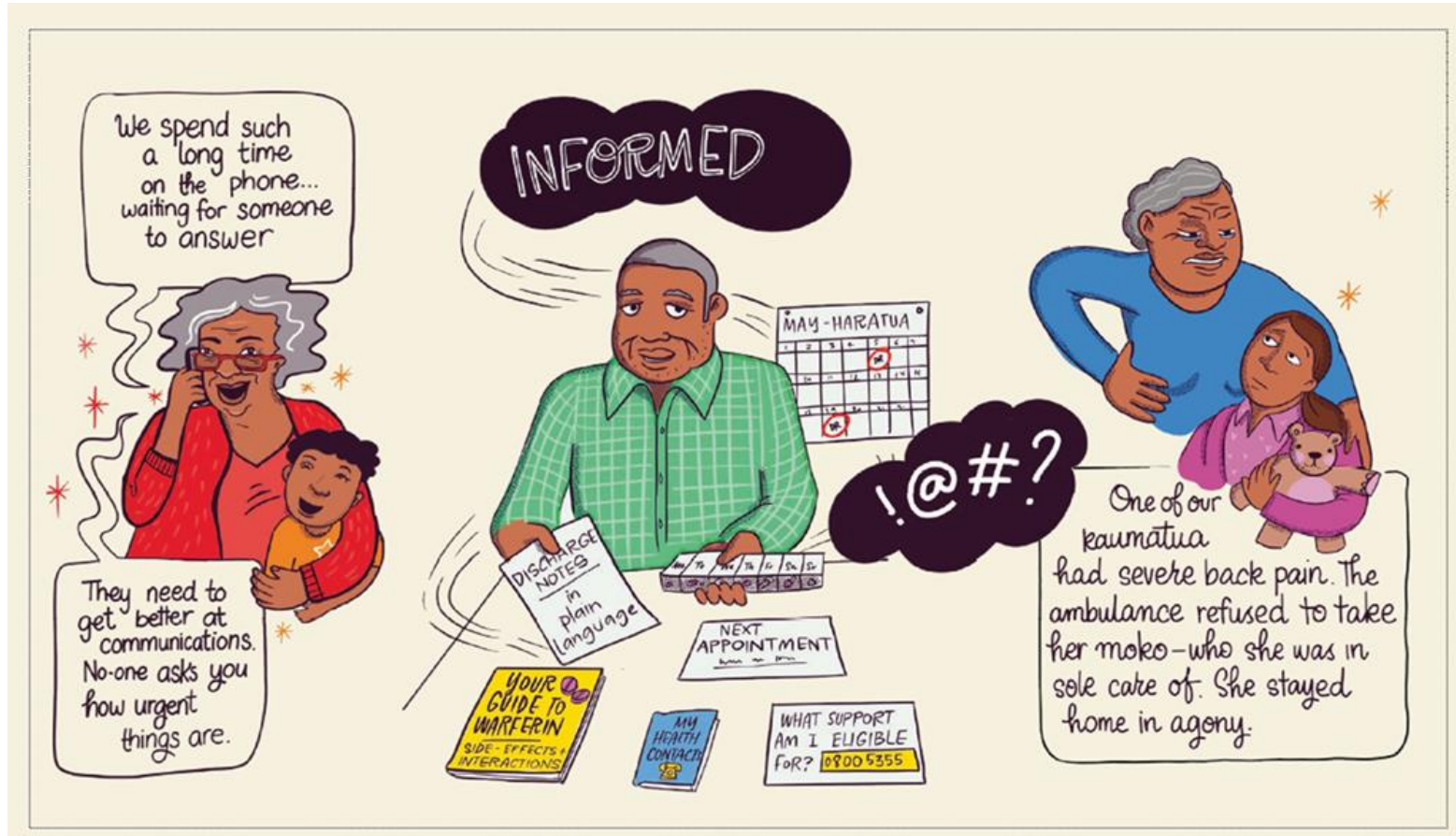
You can find:

- The report, including a large print version (3.7k views on the HDC website!)
- Desktop/ literature review prepared for the report
- Media release (500+ views of our release)



HEALTH & DISABILITY COMMISSIONER
TE TOIHAU HAUORA, HAUĀTANGA

Voices of older people, including whānau and carers living with dementia mate wareware





Priority populations – focus on people living with dementia mate wareware

- Kaumātua Māori | older Māori
- Pacific matua | older Pacific people
- Tāngata whaikaha | disabled people
 - **Higher prevalence of dementia mate wareware and ageing-related conditions**
 - Lower resident numbers in aged residential care – need for culturally safe care
 - Lower life expectancies due to inequities in accessing health and disability services

All older people receiving health or disability services



3 themes of voices and insights

1. **Better transitions of care:** older people need coordinated services, including timely access to home and community support services (HCSS) and aged residential care (ARC) and better discharge planning from hospitals
2. **System transformation:** transformative models of primary and community care so older people can access care when they need it, including navigator/social care roles and **preventative action on dementia mate wareware and ageing-related conditions** eg improving hearing aid funding and subsidy schemes
3. **Ageing well in homes and communities:** older people need access to reliable, quality care at home



HEALTH & DISABILITY COMMISSIONER
TE TOIHAU HAUORA, HAUĀTANGA



Influencing: Health NZ | Te Whatu Ora Aged Care Funding and Service Models Review

1. Sapere Phase 1 report – released April 2024 (finalised January)

- Aged care (both aged residential care (ARC) and home and community support services (HCSS)) are underfunded. Phase 1 does not include preventative dementia care eg treating modifiable risks
- Funding models not fit for purpose (likely to recommend a bulk-funded case mix model in HCSS)
- Ethnic inequities: kaumātua and Pacific matua lower numbers in ARC; Māori are higher numbers in HCSS but may not have enough hours based on health inequities
- Major workforce pressures – workforce mentioned 111 times in a their 112 page report
- Regional and rural communities face acute shortages of HCSS and ARC care

2. Sapere Phase 2 report – due September (for a business case to Cabinet for Budget bid 2025)



Health Select Committee aged care inquiry

Core aspects of Aged Care Commissioner submission:

- Future needs of our rapidly ageing, increasingly diverse population – preventing and treating dementia mate wareware must be part of long-term health and disability strategic planning
- We need an integrated continuum of care beginning with preventative primary and community care. Alzheimer's NZ reports 30,000 people (of a total 73,000) with limited services post-diagnosis
- Cultural safety – we need transformative investment in culturally safe care for people and whānau (including carers) especially: Māori; Pacific; Asian and MELAA populations; and tāngata whaikaha | disabled people. This includes more culturally safe diagnostic tools like MANA
- Asset thresholds must address the changing nature of housing (rise of renting) and cost of living for people and whānau with dementia mate wareware



Email agedcare@hdc.org.nz to be in touch



Amplifying the voices of older people

Aged Care Commissioner August 2024

To join my mailing list please email: agedcare@hdc.org.nz – including registering for our 9 October webinar

Updates include:

- Haerenga to Whanganui, New Plymouth, Manawatu and the Wairarapa to meet kaumātua and iwi Māori
- Webinar for aged residential care providers on 9 October with Principal Advisor Katherine Foulkes
- Monitoring impact of the 20 recommendations for change in my report...