

# Community Based Dementia Mate Wareware Services in Aotearoa NZ

A joint project of Dementia NZ and Alzheimers NZ



21 March 2024

Repositioning Dementia: Seeking Solutions

# Who are we?

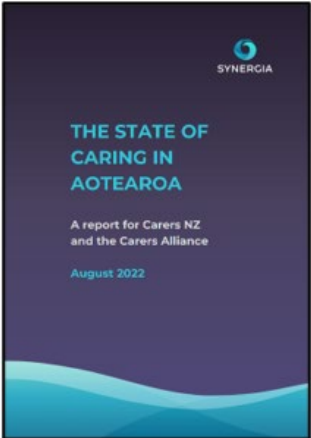
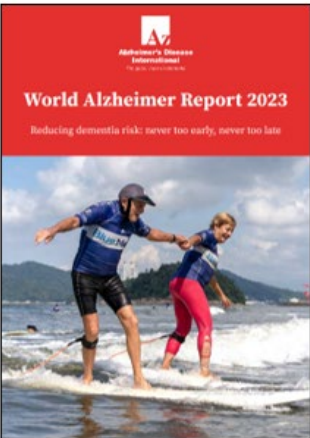
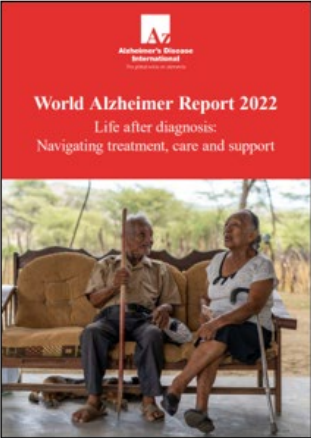
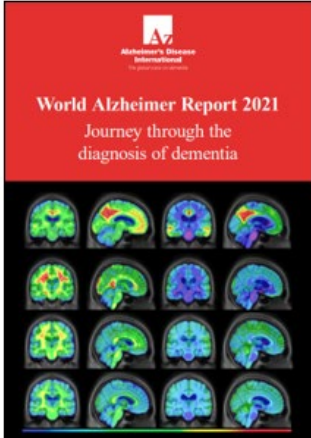
Lead community-based dementia organisations - Delivering services since mid 1980s

Authors and kaitiaki for the Dementia Mate Wareware Action Plan in partnership with the NZ Dementia Foundation and Mate Wareware Rōpū

Partner and collaborate to support people living with dementia mate wareware and establish a strong foundation for the sector

Why we did this?: alignment with Pae Ora and the Dementia Mate Wareware Action Plan, and to support implementation of the Plan

# Evidence of what works is growing as is the lived experience voice



# Reach and funding

Community based dementia services are only able to support around 16% of those who need help

Te Whatu Ora contributes less than 60% of funding - \$1100/per person per annum incl Day Programmes and \$630 pp per annum excluding Day Programmes

Te Whatu Ora funding varies significantly across the country – 0 to 90% contribution and \$0 to \$4,560 per person per year

Between 2018 and 2022 costs increased 16% and revenue increased by only 8%

# Developing the Service Model

Joint team comprising staff from Alzheimers NZ, Dementia NZ and people with lived experience of dementia

Mate Wareware Advisory Rōpū provided essential input

Drew on national and international research and community-based dementia service models

# The Service Model

## The Kaupapa

- People living with dementia mate wareware are active, engaged and able to live with confidence and autonomy.
- Deliver accessible, equitable, quality assured and human rights based community support for people living in communities.
- Raising awareness, promoting brain health, challenging stigma and discrimination, and providing education and support which enables people and their whānau to live their best possible lives.

Describes principles, scope, service mix, workforce

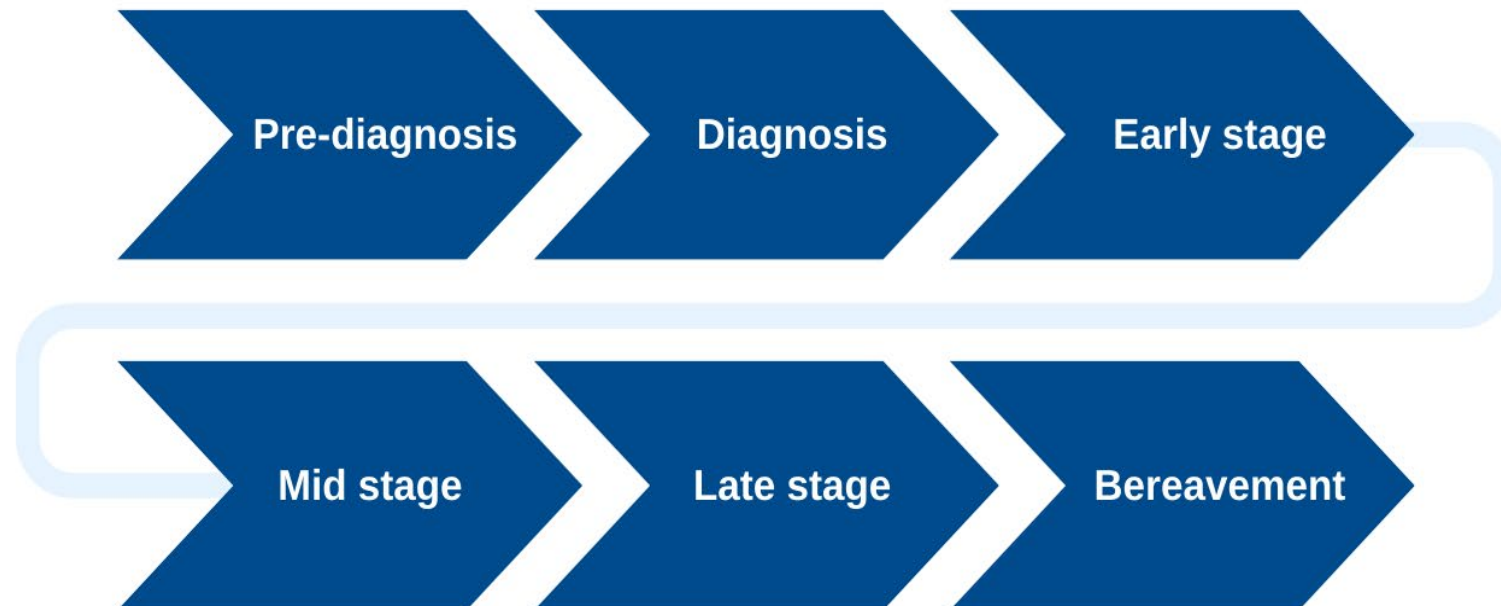
## Eight interlinked principles

- **Rangatiratanga and human rights** – respecting the person's rights
- **Manaakitanga and person-directed** – person centred services
- **Whanaungatanga** – reciprocal relationships via a professional network.
- **Wairuatanga** – recognition of spiritual dimensions.
- **Comprehensive and integrated** – services are respectful of the whole life-course of dementia mate wareware
- **Kaitiakitanga** –upholds the mana of the person
- **Evidence-based and consistent** – services reflect best practice
- **Kotahitanga** – working collaboratively and with unity of purpose

# Scope

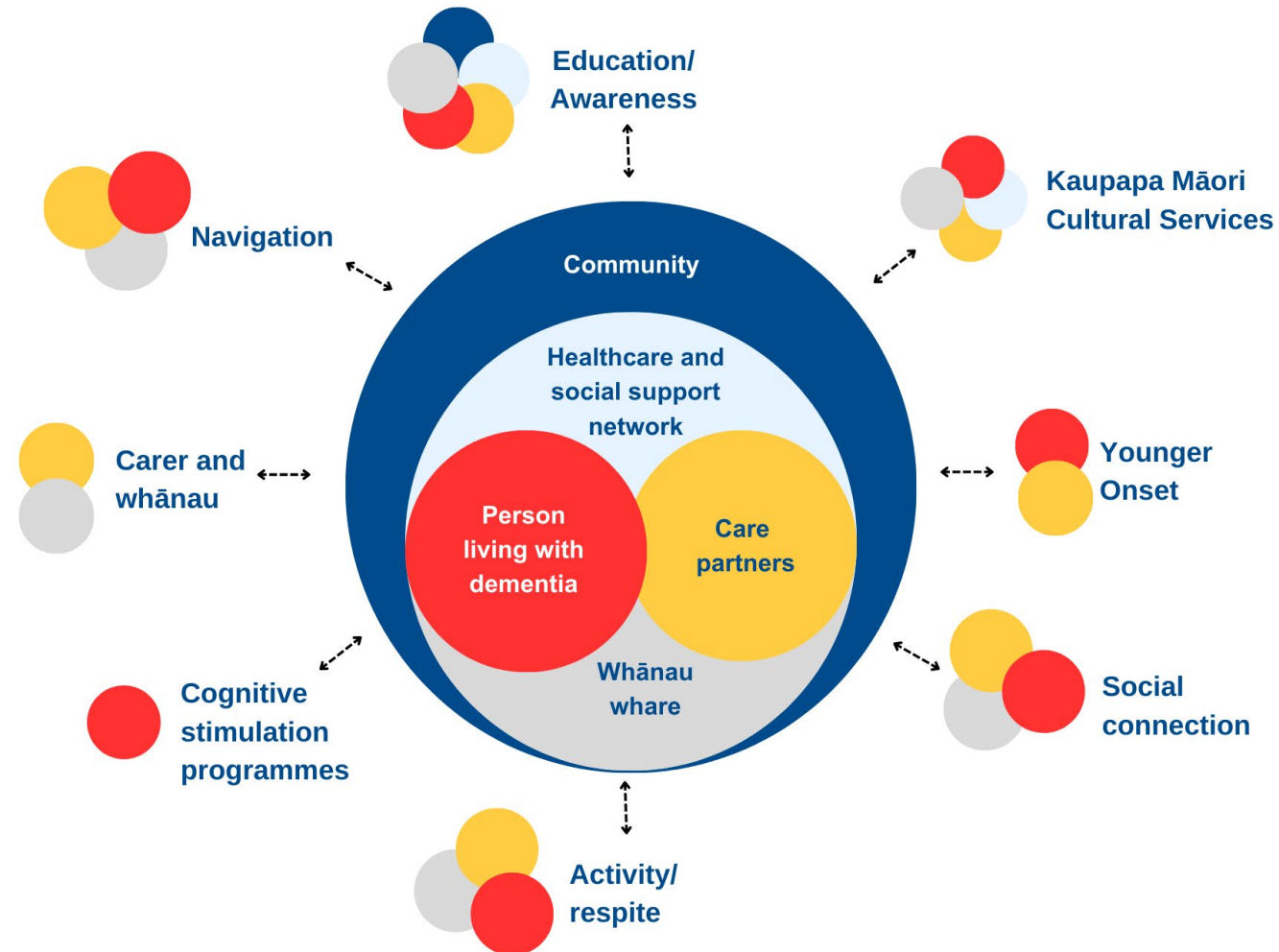
## Community-Based Services

Deliver comprehensive, multi-modal pre and post diagnostic support across the dementia care journey while the person is living in the community.





# Service framework – An integrated network



# The model costing

## **Developed by MartinJenkins with the partners Alz NZ and DNZ:**

- Is future-focussed accounts for population growth, inflation and increased efficiency - including new technology enabling virtual access to support/education
- Calculates a reasonable caseload per Dementia Advisor of 90 People Living with Dementia plus carer and whānau
- Includes a demand profile for younger onset services by region, plus ethnicity by region for planning relevant service delivery
- An establishment phase of three years built into the model to enable service providers to build capacity and capability to deliver the full suite of services from 2027 (funding dependent)
- Is realistic and not exaggerated or 'gold plated'
- Is cost effective - \$11.11 per day compared to Aged Residential Care at \$373 per day and a hospital bed at \$1,700 per day

# Next steps

Progressing with model services that can be implemented now – eg aligning navigation and education with model; caseload management; workforce/skill mix development

A nationally consistent comprehensive costed model to guide equitable commissioning

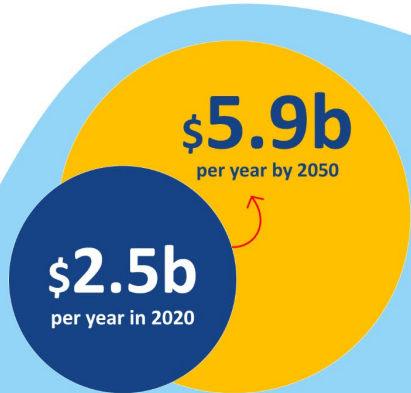
Collaboration/support with developing/emerging Kaupapa Māori and Pasifika services

Engage with Te Whatu Ora on model and funding – growth in reach to meet demand requires increase in funding contribution

Urgent funding is needed for

# Dementia services

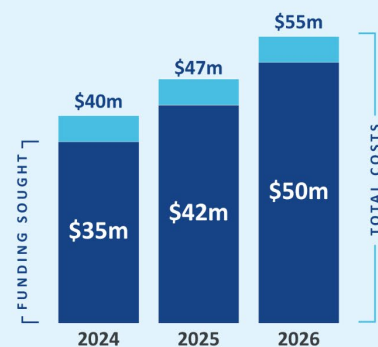
A new service model will provide early and ongoing support to people living with dementia and their whānau, and reduce the impact of dementia on the health system and the economy.



**Annual cost estimates:** Dementia costs the economy \$2.5b annually. This is estimated to grow to \$5.9b by 2050.

Funding required over the next 3 years:

**\$127.28m**



Funding will:

- Keep up with the growing number of people living with dementia, and extend the reach of support through a new service model
- Provide nationally consistent services for effective, evidence-informed, and evolving community-based support services
- Support a sustainable sector that provides a cost-effective alternative costly residential care and hospital services

and ultimately support:

**37,400**  
Families

Community-based support services help people live their best possible lives...



It reduces costs by delaying entry to care



It improves wellbeing of people living with dementia and their care partners



It supports inclusive communities

# Related issues

Community dementia services are part of a continuum of services which is under funded and under pressure end-to-end

Opportunities to improve the rest of the system are not yet being taken:

- Risk reduction eg hearing aids and brain health integrated into health promotion for older people
- Gaps in diagnosis prevent people getting timely help
- Carers continue to be neglected – 46% overwhelmed when caring for a person with a cognitive impairment
- Community and home support services are inadequate
- Integration across system not happening so hospital/secondary services remain under pressure
- Workforce capacity and capability remains a significant problem