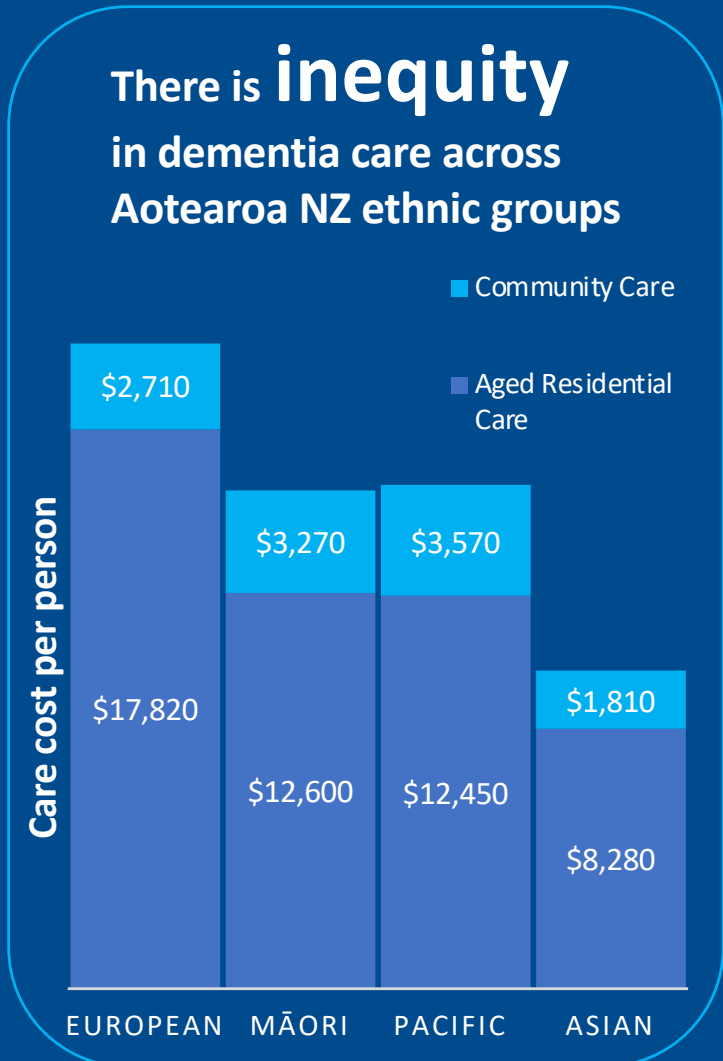
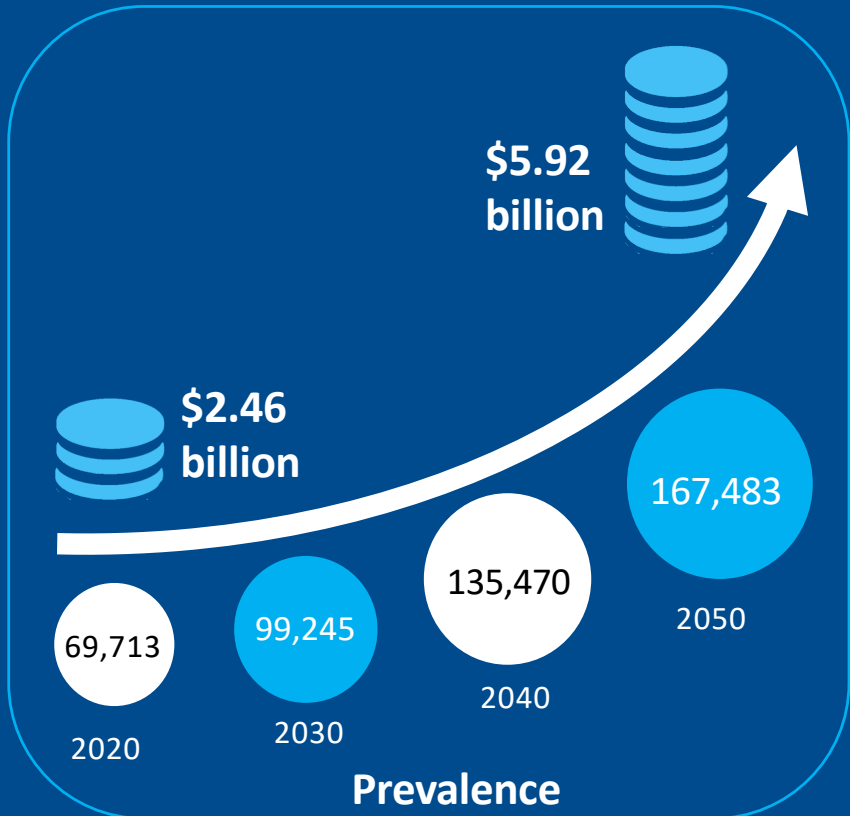


# Dementia: a rapidly growing problem for Aotearoa NZ

September 2021



One in four people will die with dementia

Dementia is increasing **faster** in Māori, Pacific, and Asian peoples

- ## Priority Areas
- Research on the true rates of dementia in Aotearoa NZ
  - Culturally appropriate care that maximises quality of life
  - A National Dementia Plan for Aotearoa NZ